

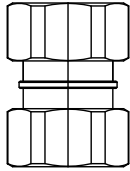
Low PIM Adapters



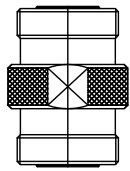
Low PIM Adapters

7/16 Low PIM 8 PC Kit

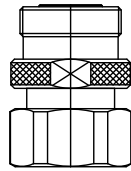
ADP-3000-309-LP



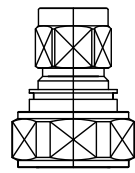
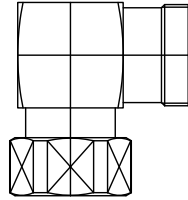
ADP-3000-310-LP



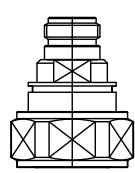
ADP-3000-311-LP



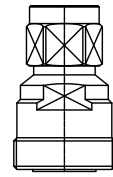
ADP-3000-373-LP



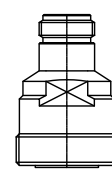
ADP-3000-343-LP



ADP-3000-342-LP



ADP-3000-345-LP



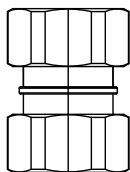
ADP-3000-344-LP

ADP-716KIT-1001

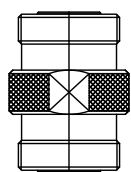
8 PC KIT

7/16 Low PIM 4 PC Kit

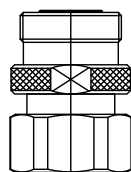
ADP-3000-309-LP



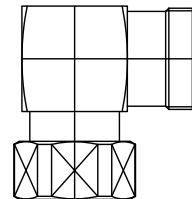
ADP-3000-310-LP



ADP-3000-311-LP



D716-806-001

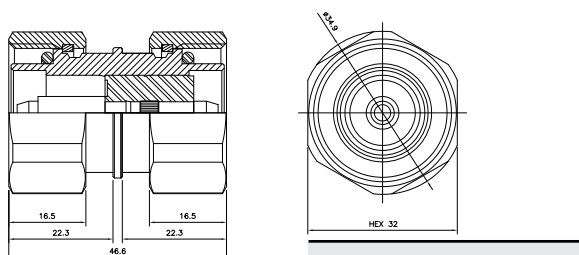


ADP-716KIT-1002

4 PC KIT

Low PIM Adapters

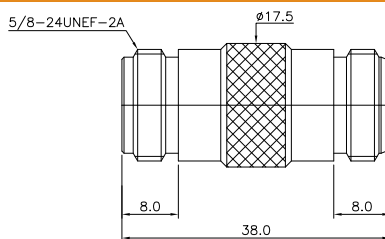
DIN 7/16 Type Plug to DIN Type Plug Adapter



Part No.

ADP-3000-309-LP

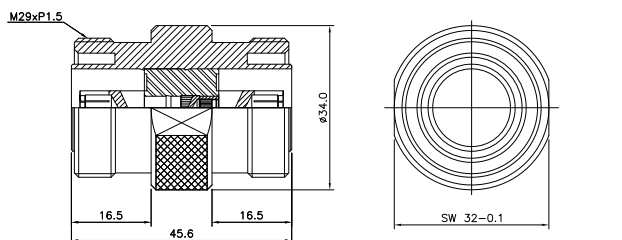
N-Type Jack to Jack



Part No.

ADP-3000-313-LP

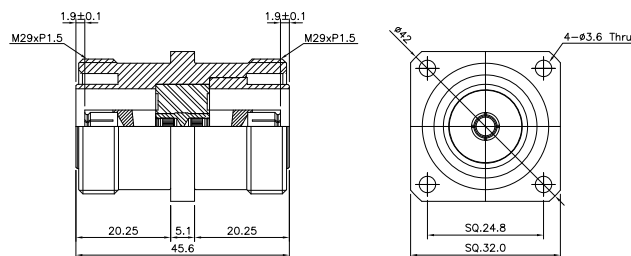
DIN 7/16 Type Jack to DIN Type Jack Adapter



Part No.

ADP-3000-310-LP

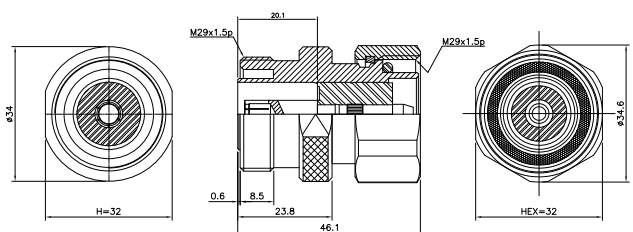
DIN 7/16 Type Jack Type to DIN Type Jack Type



Part No.

ADP-3000-338-LP

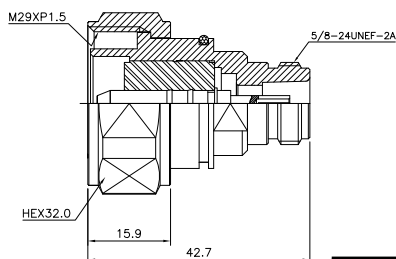
DIN 7/16 Type Jack to DIN Type Plug Adapter



Part No.

ADP-3000-311-LP

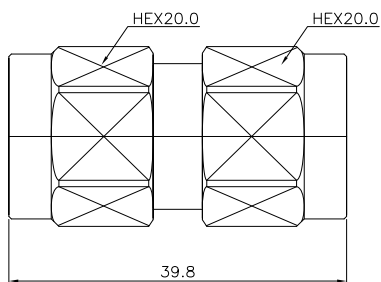
DIN 7/16 Type Plug to N-Type Jack



Part No.

ADP-3000-342-LP

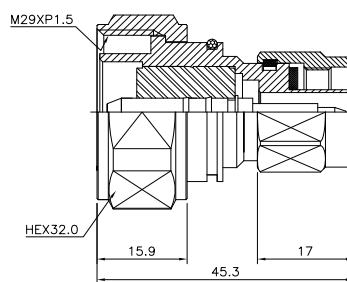
N-Type Plug to Plug



Part No.

ADP-3000-312-LP

DIN 7/16 Type Plug to N-Type Plug

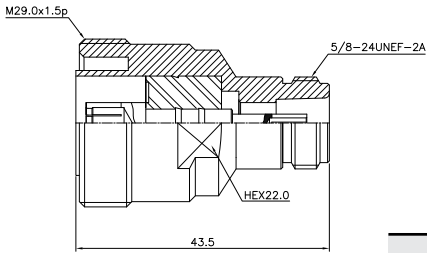


Part No.

ADP-3000-343-LP

Low PIM Adapters

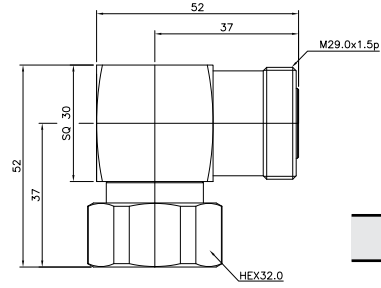
DIN 7/16 Type Jack to N-Type Jack



Part No.

ADP-3000-344-LP

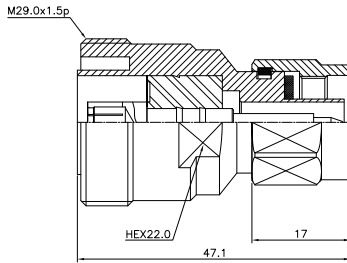
DIN 7/16 Type Plug Right Angle to DIN Type Jack



Part No.

ADP-3000-373-LP

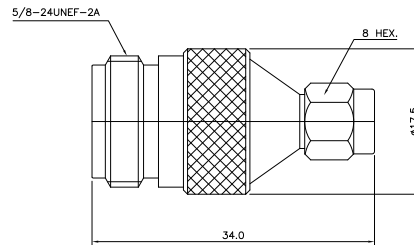
DIN 7/16 Type Jack to N-Type Plug



Part No.

ADP-3000-345-LP

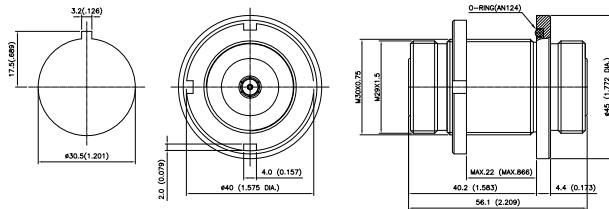
N-Jack to SMA Plug



Part No.

ADP-3000-376-LP

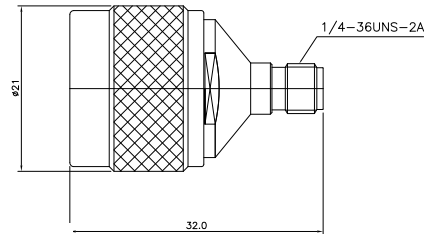
DIN 7/16 Bulkhead Jack-Jack Adapter with Seal



Part No.

ADP-3000-365-LP

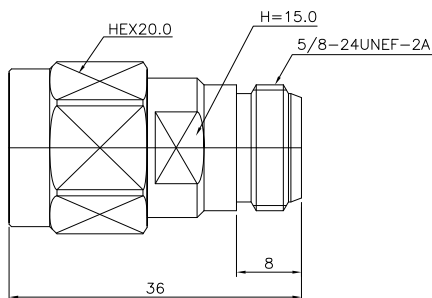
N Plug-SMA Jack Adapter



Part No.

ADP-3000-377-LP

N-Type Plug to Jack



Part No.

ADP-3000-370-LP

