

SMB SPECIFICATIONS



SMB Series are subminiature precision connectors and are a smaller version of the SMA Connector with snap on coupling. These are best suited for applications from DC - 4 GHz. The SMB connectors are made of Brass with Gold or Nickel plated. Standard configurations are shown on product pages, please contact factory for your custom designs.

TECHNICAL SPECIFICATIONS

Electrical

Impedance:	50 ohms
Freq Range:	DC - 4 GHz (usable 10 GHz)
Voltage Rating:	335 V Peak
Constant Resistance:	Center Contact: 6.0 Milli ohms Body: 1.0 Milli ohms Braid to Body: 1.0 Milli ohms
Insulation Resistance:	1,000 Meg ohms
RF Leakage:	-55 dB min @ 2-3 GHz



Material/Finish

Body:	<i>(Standard)</i> Brass with Gold <i>(Option)</i> Brass with Nickel plated. To order Brass/Nickel, add "BN" as a prefix to the P/N.
Center Contact Male:	Extruded Brass, gold plated
Center Contact Female:	Beryllium Copper, gold plated
Dielectric:	PTFE Fluorocarbon per ASTM D-1457
Gasket:	Silicone Rubber ZZ-R-765
Crimp Ferrule:	Annealed Copper

Mechanical

Mating:	50 ohm screw on coupling (SMC)
Mating:	50 ohm snap-on coupling (SMB)
Connector Durability:	500 cycles
Mating Torque:	Recommend 2 - 3 inch per pound.
Cable Affixment to center Contact:	Solder

Note: These characteristics are typical but may not apply to all connectors.

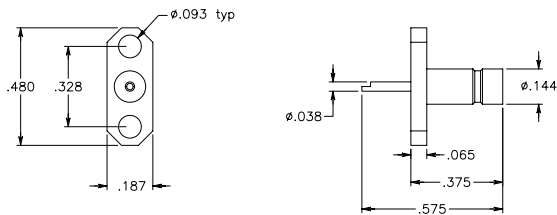
SMB CONNECTORS



*Add "BN" as a prefix to P/N to order Brass/Nickel.
 *Add "NC" as a prefix to P/N to order W/Out Captivation.

SMB

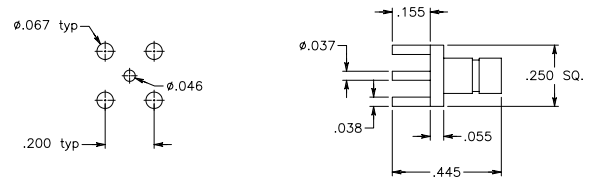
(SMB Jack)
2-Hole Flange Mount
Solder Cup Contact



PART #
 SMB 6000-1001

Captive Contact

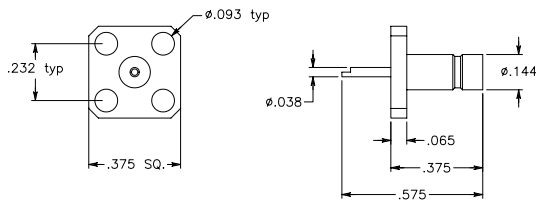
(SMB Jack)
Printed Circuit Mount



PART #
 SMB 6000-1004

Captive Contact

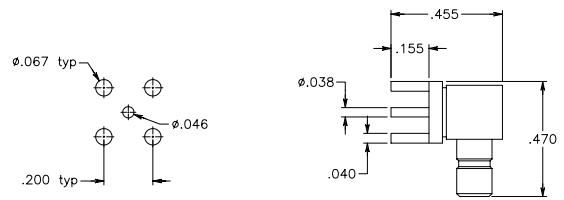
(SMB Jack)
4-Hole Flange Mount
Solder Cup Contact



PART #
 SMB 6000-1002

Captive Contact

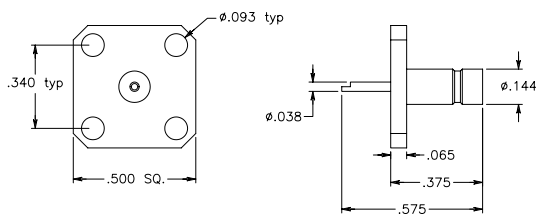
(SMB Jack)
Right Angle
Printed Circuit Mount



PART #
 SMB 6000-1005

Captive Contact

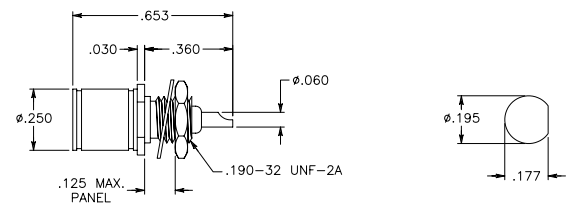
(SMB Jack)
4-Hole Flange Mount
Solder Cup Contact



PART #
 SMB 6000-1003

Captive Contact

(SMB Plug)
Bulk Head Receptacle
Front Mount Solder Cup Terminal



PART #
 SMB 6000-1006

Captive Contact

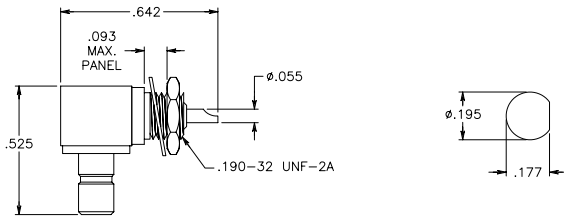
SMB CONNECTORS



*Add "BN" as a prefix to P/N to order Brass/Nickel.
 *Add "NC" as a prefix to P/N to order W/Out Captivation.

SMB

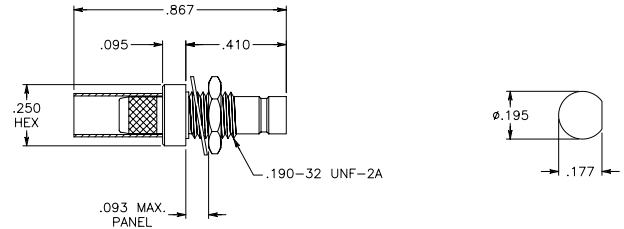
(SMB Jack)
 Front Angle Bulk Head Receptacle
 Front Mount Solder Cup Terminal



PART #
 SMB 6000-1007

Captive Contact

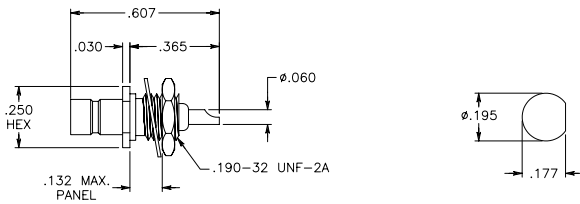
(SMB Jack)
 Bulk Head Crimp Attachment
 For RG174, RG188 & RG316



PART #
 SMB 6000-1010

Captive Contact

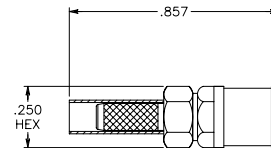
(SMB Jack)
 Bulk Head Receptacle
 Front Mount Solder Cup Terminal



PART #
 SMB 6000-1008

Captive Contact

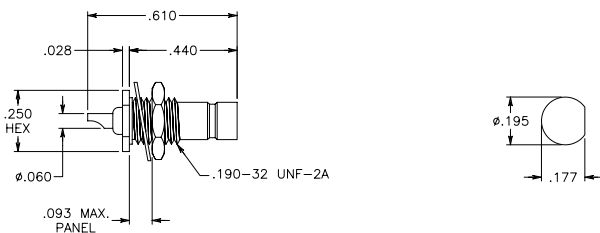
(SMB Plug)
 Crimp Attachment
 For RG178 & RG196



PART #
 SMB 6000-1011

Captive Contact

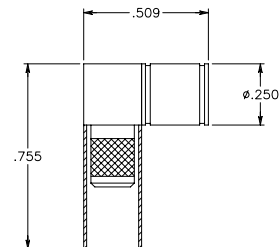
(SMB Jack)
 Bulk Head Receptacle
 Rear Mount Solder Cup Terminal



PART #
 SMB 6000-1009

Captive Contact

(SMB Plug)
 Right Angle Crimp Attachment
 For RG55, RG142, RG223 & RG400



PART #
 SMB 6000-1012

Captive Contact