

QMA Series are a quick disconnect version of SMA connector and shares the same internal construction. These connectors rotate 360 degree after connection for flexibility, snap-on interface for easy and quick installation. These are best suited for applications from DC - 6 GHz. The QMA connectors are made of Brass with Gold or Nickel plated. Standard configurations are shown on product pages, please contact factory for your custom designs.

TECHNICAL SPECIFICATIONS

Electrical

Impedance:	50 ohms
Freq Range:	DC - 6 GHz
Voltage Rating:	335 V Peak
Constant Resistance:	Center Contact: 3.0 Milli ohms Body: 1.0 Milli ohms
Braid to Body:	1.0 Milli ohms
Insulation Resistance:	5,000 Meg ohms
RF Leakage:	-80 dB min @ DC-3 GHz, -70 dB min @ 3-6 GHz



Material/Finish

Body:	<i>(Standard)</i> Brass with Nickel
Center Contact:	Extruded Brass, gold plated
Dielectric:	PTFE Fluorocarbon per ASTM D-1457
Crimp Ferrule:	Annealed Copper

Mechanical

Engagement Force:	5.6 lbs
Disengagement Force:	4.5 lbs
Connector Durability:	100 cycles

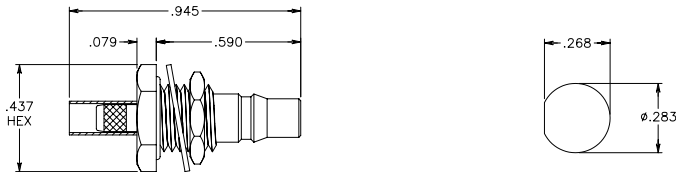
Note: These characteristics are typical but may not apply to all connectors.

QMA CONNECTORS



*Add "NC" as a prefix to P/N to order W/Out Captivation.

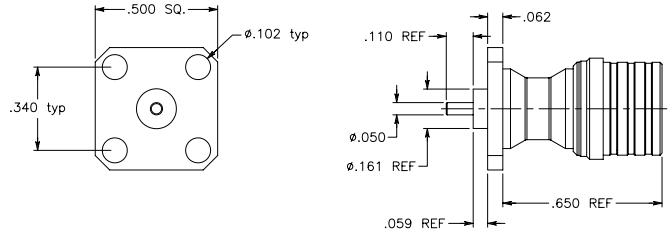
(QMA Jack Bulk Head)
Crimp RG174, RG188 & RG316



PART #
QMA 9000-1001

Captive Contact

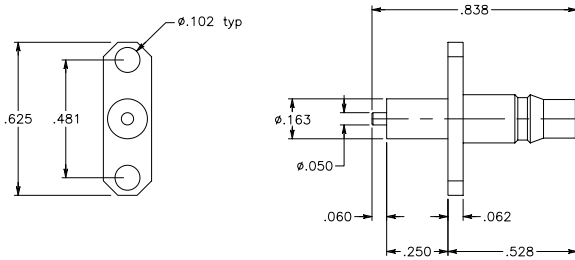
(QMA Plug)
4-Hole Flange Receptacle



PART #
QMA 9000-2001

Captive Contact

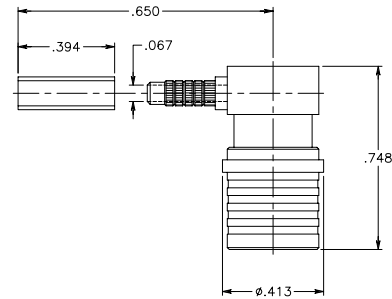
(QMA Jack)
2-Hole Flange Receptacle



PART #
QMA 9000-1002

Captive Contact

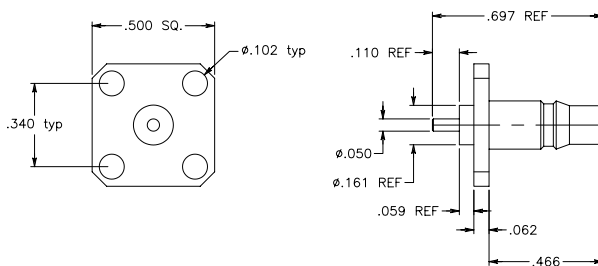
(QMA Plug)
Right Angle
Right Angle RG316



PART #
QMA 9000-2002

Captive Contact

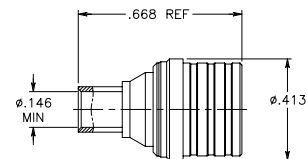
(QMA Jack)
4-Hole Flange Receptacle



PART #
QMA 9000-1003

Captive Contact

(QMA Plug)
For .141 Semi-Rigid



PART #
QMA 9000-2003

Captive Contact