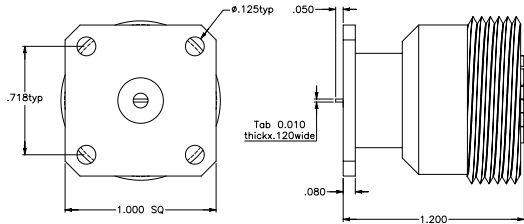
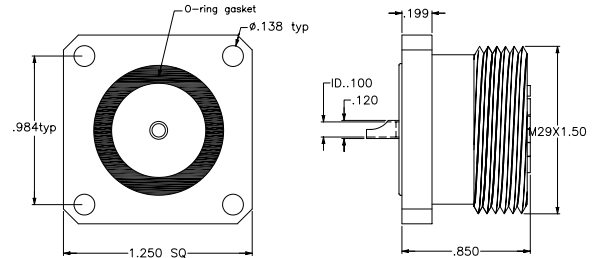


(1" Square Flange Jack)



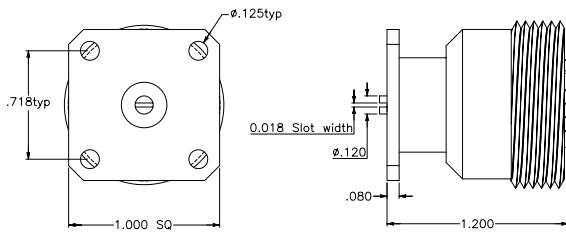
PART #
716-8000-1001

(1.25" Square Flange Jack)



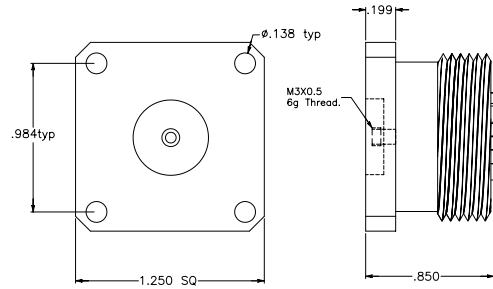
PART #
716-8000-1004

(1" Square Flange Jack)



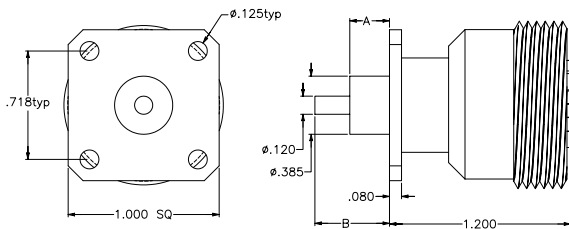
PART #
716-8000-1002

(1.25" Square Flange Jack)



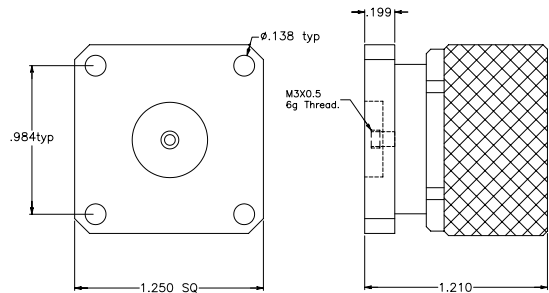
PART #
716-8000-1005

(1" Square Flange Jack, Extended Dielectric)



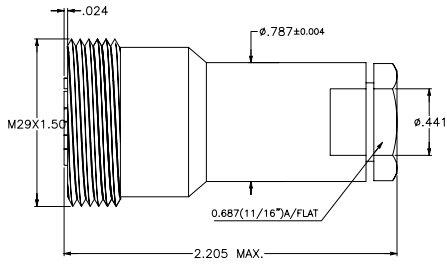
PART #	Dim A	Dim B
716-8000-1003	.600	.710
716-8000-1003-1	.325	.500
716-8000-1003-2	.000	.100

(1.25" Square Flange Plug)



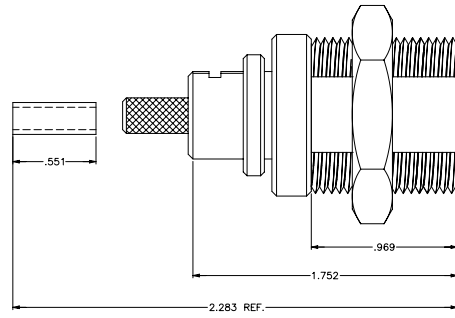
PART #
716-8000-2001

(Straight Jack)
 RG 165, 213, 214, 215, 225



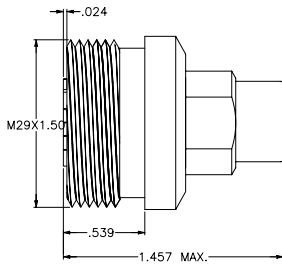
PART #
716-8000-1006

(7/16 B H Jack)
 LMR 240



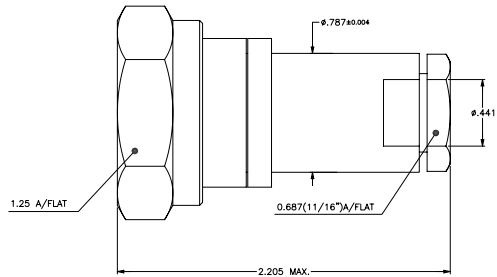
PART #
716-8000-1008

(7/16 Female)
 1/4" Flexible Cable



PART #
716-8000-1007

(Straight Plug)
 RG 165, 213, 214, 215, 225



PART #
716-8000-2002